



Ashington Parish Council

Telephone: 07851 009655

Email: clerk@ashingtonpc.org.uk

www.ashingtonpc.org.uk

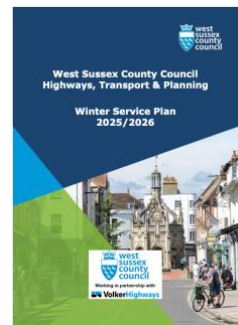
WINTER RESILIENCE PLAN

[West Sussex County Council Winter Service Plan 2025/26](#)

This document sets out how the County Council responds to icy and snowy weather during the winter period.

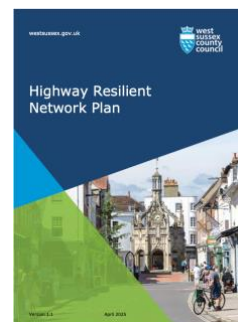
It is the policy of West Sussex County Council, to provide a service that:

- Salts a network of identified carriageways (The Winter Service Network) to assist in the prevention of ice forming or snow accumulating.
- Spot salt other roads, selected footways, and cycleways to assist in the removal of the winter hazard where deemed necessary and where resources allow.
- Maintain, so far as is reasonably practicable, safety and traffic flows during snowfall by salting and ploughing the Winter Resilient Network. The Winter Resilient Network is smaller than the Winter Service Network and is based on defined priorities for treatment in the event of heavy snowfall. Generally, dual carriageways and multi-lane roads will be driven and treated in the nearside lane only.
- Following snowfall, restore normality on a priority basis to its carriageways, footways, and cycleways as soon as possible.
- The Winter Service operational period in West Sussex is from 1st October to 30th April. Outside of this period, extraordinary winter events are dealt with via normal contract procedures.



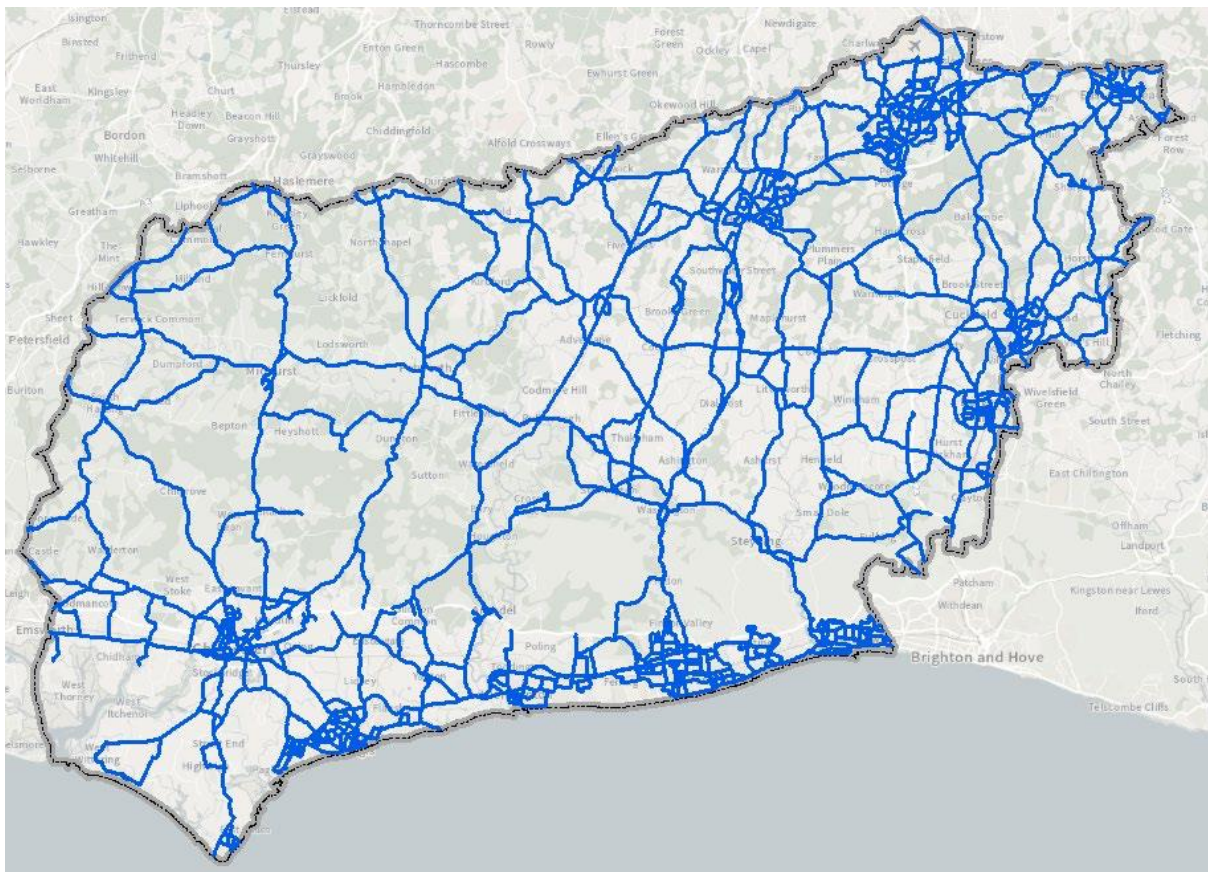
[Highway Resilient Network Plan](#)

This details the network of key roads that will be gritted in the event of extreme weather (or indeed other emergency situations).



The Winter Service Plan includes details of the - **Winter Service Network**, which is the network treated as a precaution to help prevent ice forming. It comprises areas of local importance and includes -

- Major Road Network, made up of 'A' and 'B' class carriageways.
- Access to emergency services.
- Access to hospitals, especially those with A&E.
- Principle public transport hubs.
- Key train stations.
- Bus depots and garages.
- Main bus routes
- Key infrastructure, including ports, water treatment works, electric generation sites
- Connectivity between major communities.

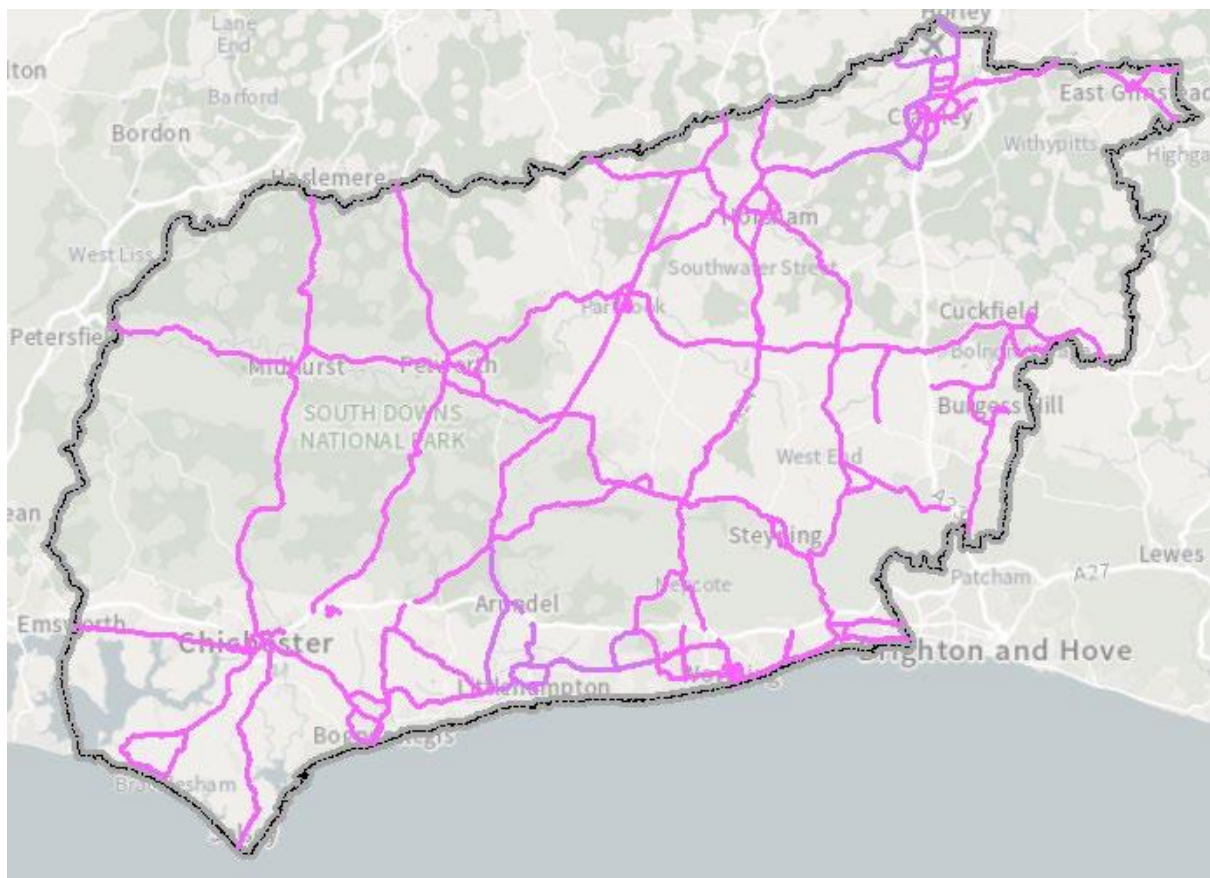


For Ashington, this would include the A24, London Road, B2133 Billingshurst Road, Hole Street, Rock Road and the nearby A283 heading west from Washington roundabout to Storrington and heading east to Steyning.

Winter Resilient Network is a smaller network which focuses on key roads in periods of severe weather.

The network includes -

- Connectivity between major communities
- Links to the strategic highway network
- Connectivity across authority boundaries where appropriate
- Links to transport interchanges
- Access to emergency facilities including Fire and Rescue, Police, Ambulance Services and Hospitals
- Links to critical infrastructure (ports, power stations, water treatment works etc.)
- Principle public transport routes, access to rail and bus stations, and to bus garages and other depots
- Other locally important facilities.



For Ashington parish, this would include the A24, entry and exit roads from the A24 into the village and the London Road through the village.

WSCC Highways Commitment 2025/26

WSCC Highways undertakes to do the following:

- Monitor the daily forecast provided by our weather forecast provider between October and April and take appropriate actions. Issue a Daily Decision to all interested parties via @WSHighways.
- Treat the Winter Service Network – 42% of the county’s 4,400km road network.
- Purchase and store at our five depots at least 10,000 tonnes of de-icing road salt during the summer months when prices are advantageous.
- Liaise with the Government’s “Salt Cell” and actively participate in Mutual aid with adjacent Highway Authorities.
- Maintain a fleet of 20 gritters (bulk spreaders) between October and April.
- Issue a pre-snow trigger email in the event of a significant weather event to advise communities when to activate the Local Farmer and Contractor Agreement for WSCC funded activities.

WSCC Highways does not undertake any of the following:

- Treating roads not identified as part of the Winter Service Network.
- Hand treating of footways / cycleways / precincts as a precautionary exercise.
- Treating private, 3rd party or non-highway land.
- Refilling salt bins or replacing Hippo Bags during the winter period free of charge.
- Delivering salt bins or hippo bags once the winter season has started free of charge.
- Funding farmers to clear roads that have not been identified in the agreed Local Winter Plan, or when clearance has been undertaken without consent to activate from WSCC.

Community Winter Resilience Plans 2025/26

WSCC receive Community Winter Plans from more than half of the Parish and Town Councils in West Sussex. These plans help to coordinate activities, identify local assets, and inform residents during periods of extreme weather.

Ashington Parish Council Winter Resilience Plan

Ashington Parish Council have chosen to submit a Winter Resilience Plan to WSCC to ensure key routes in the village are gritted in the event of extreme weather conditions. This is in addition to routes designated in the WSCC Winter Service and Resilient Networks.

Contact details of nominated persons

	Phone	Email
Lee English Parish Clerk	07851 009655	clerk@ashingtonpc.org.uk Will receive trigger email
Richard Kennard Sussex Manures / Kennard Plant Hire	01903 877689	Email details held by clerk and WSCC Will receive trigger email

Local Farmers and Contractors Agreement

We have agreed for WSCC to enter into an agreement with a local Farmer/Contractor to clear pre-designated roads in Ashington should a “trigger email” be sent from WSCC Highways advising of a forecasted significant snow event.

The designated contractor is [Sussex Manures / Kennard Plant Hire](#) (approved by WSCC). We have agreed a **REACTIVE** service - so the contractor will only come out once the gritting has been approved by councillors.

Trigger Mechanism

The Winter Management Plan is intended as a response to **significant weather events ONLY**. WSCC Highways will issue an email directed at the particular areas forecasted to experience significant weather event. Example: *... is forecasted to have a significant snow event in the next 3 to 4 days' time please put your Winter Maintenance Plans into Action.*

- **Precautionary Salting:** Advisory email of a significant weather event will be the trigger mechanism for paying farmers and/or local contractors to move bulk bags, undertake precautionary salting.
- **Snow Clearance:** Advisory email of a significant weather event will be the trigger mechanism for paying farmers and/or local contractors' for snow clearance - 2” (50mm) of accumulated snow.

Cost

Current contractor prices for winter 2025/26

Full grit	£150
Blue route only (London Road)	£90
Pink route only (Rectory Lane to The Sands, Foster Lane, Church Lane)	£60
Snow plough rate	£100 per/hr (min 2 hrs)

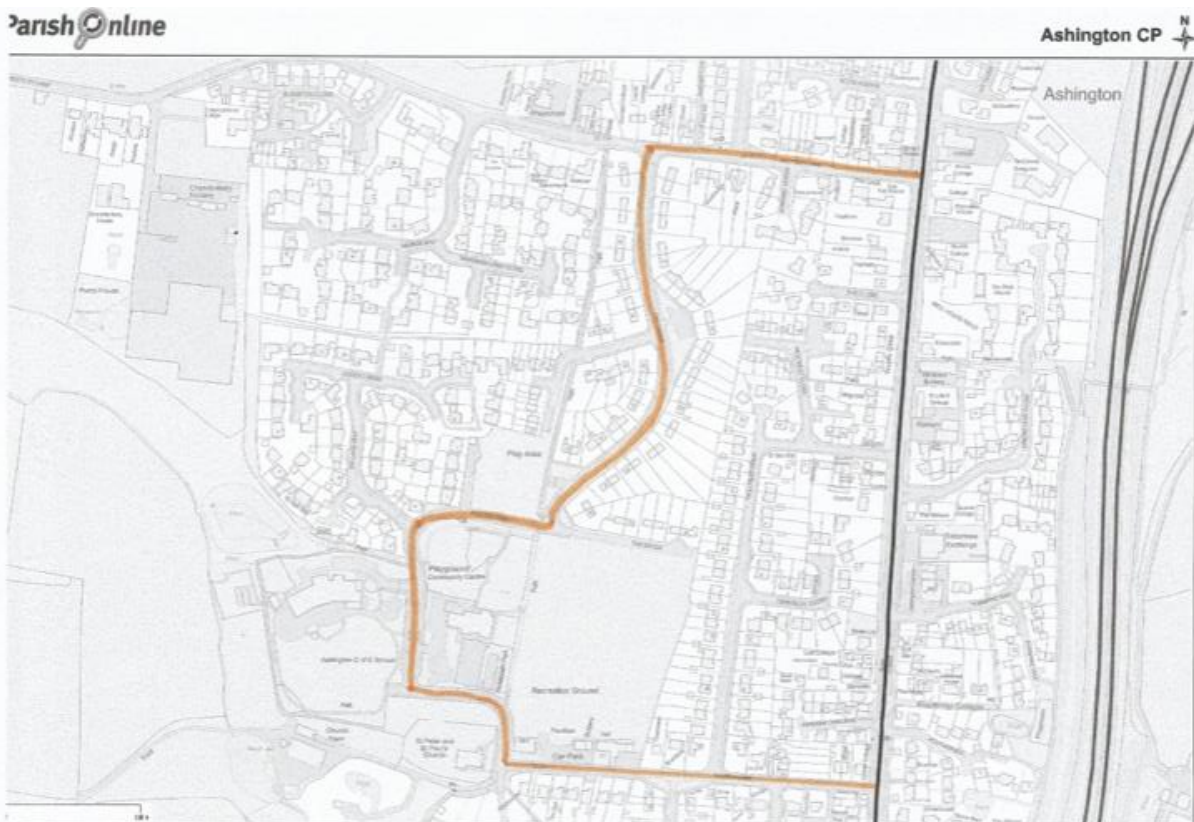
All prices plus vat

Financial contributions

A financial contribution can only be claimed once a trigger email has been sent from WSCC Highways. In line with national agreed standards with the NFU and other neighbouring authorities, WSCC will:

- Provide £35 per hr towards farmers/local contractors to carry out precautionary salting to local roads identified in the agreed Local Community Winter Maintenance Plans as a result of a WSCC notification in advance of a significant snow event.
- Provide £35 per hr towards farmers/local contractors to clear snow as a result of a significant snow event, from local roads identified in the agreed Local Community Winter Maintenance Plans and whose activities have been activated through the agreed Trigger Mechanism
- In order to take part in the “Local Farmers and Contractors Agreement” the contractor must be covered by their own Public Liability Insurance at the date they carry out the work.

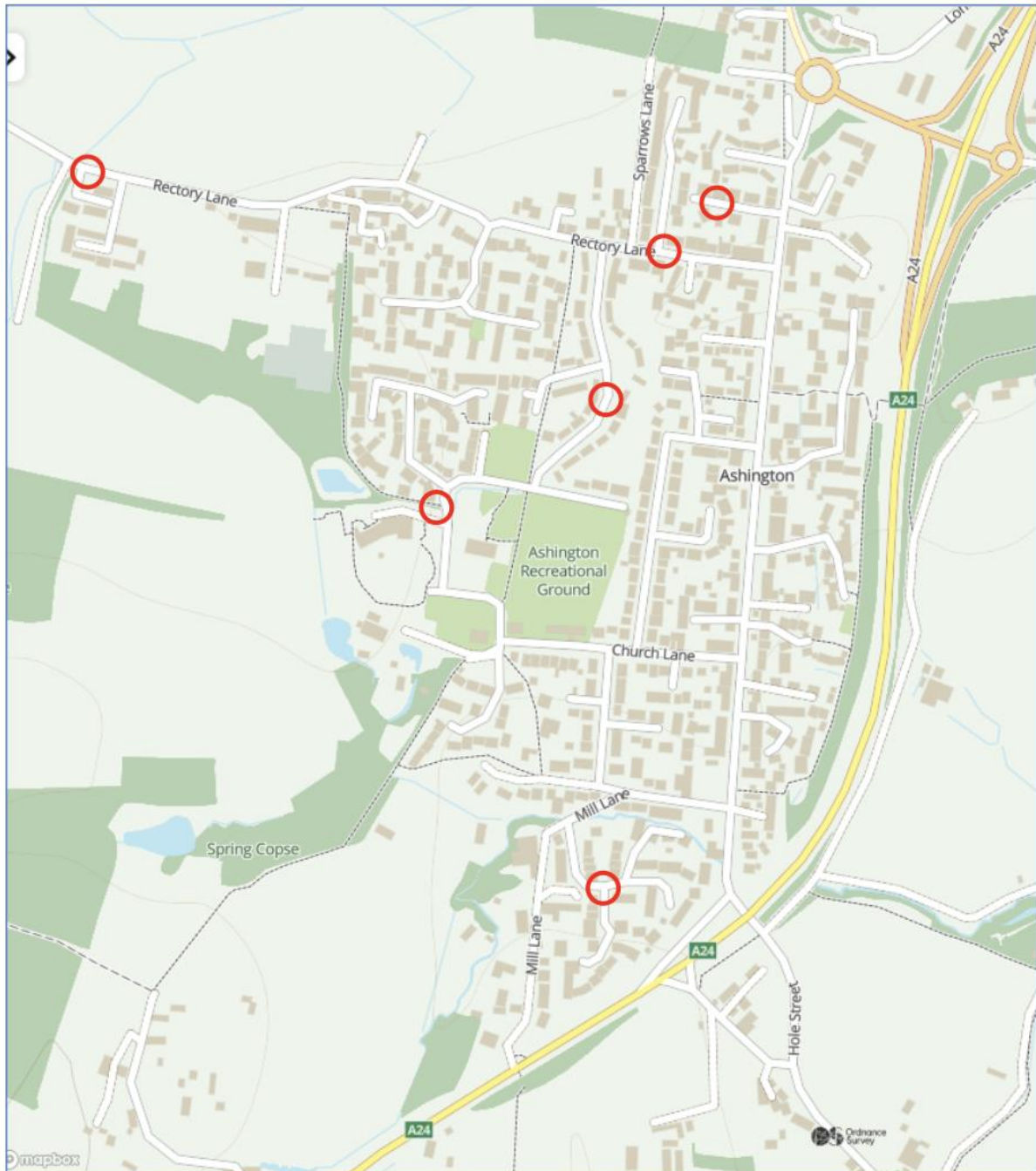
Gritting route



Salt/Grit bins

There are 6 bins located around the village

- Alicia Avenue (outside no. 5)
- Rectory Lane (junction with Rectory Close)
- Rectory Lane (junction with Mousdell Close)
- The Sands (outside no. 18)
- Foster Lane (footpath next to school)
- Willow Way (junction with Mill Mead)



Salt/Grit bin audits

The parish council undertake an audit of the salt/grit in each bin every year and submit the audit to WSCC who will fill any bin less than 75% full before the winter period.

Advice regarding spreading salt/grit

Spread rates

The amount of salt applied to a surface varies depending on the forecasted temperature and conditions. Typically -

- **10 grams** of salt is applied to each metre square of road surface as a precautionary treatment when surface temperatures are forecast to fall between **0°C and -2°C and ice or hoar frost is anticipated.**
- **20 grams** of salt is applied to **each metre square of road surface** as a precautionary treatment when surface temperatures are forecast to fall below **-2°C and ice or hoar frost is anticipated.**
- **40 grams** of salt is applied to each metre square of road surface as a precautionary treatment when **snow is anticipated.**

Advice on hand salting

WSCC recommends a spread rate of **approximately 20 grams of salt / grit per metres square** when hand salting. 20 grams is in fact a very small amount. You don't need a lot of salt to protect a footway. Use it sparingly. Over salting is damaging to the environment and a waste of a limited resource.



The white board in the photo is one metre square and has 20 grams of salt / grit spread across it. You will observe that you do not need a lot of salt to protect the footways. Spread it evenly and your salt will last longer and cover a greater area.

Although salt / grit can be spread effectively with shovels, care is required to ensure over salting does not occur. Push-along devices as shown above can be used to cover larger areas with an even spread. Large areas can thus be treated quicker with less wastage.



De-icing road salt

Salt is the preferred material used for treating the Precautionary Salting Network. When the salt is spread on road surfaces it combines with moisture on the surface or air to form a brine solution, which freezes at a lower temperature than rainwater.

Grit

Grit, sharp sand or marine washed aggregates are sometimes used as an alternative to salt. Although they can provide traction when spread on top of compacted snow and ice, they have no melting capabilities.

Precautionary / reactive treatments

As the name suggests precautionary treatments take place before the predicted event to allow time for salt to turn into brine. Reactive treatments such as snow ploughing can only take place once snow has accumulated.

Approved 9th October 2025 ref: 268/25 - next review October 2026